

Geollect

The maritime domain awareness platform

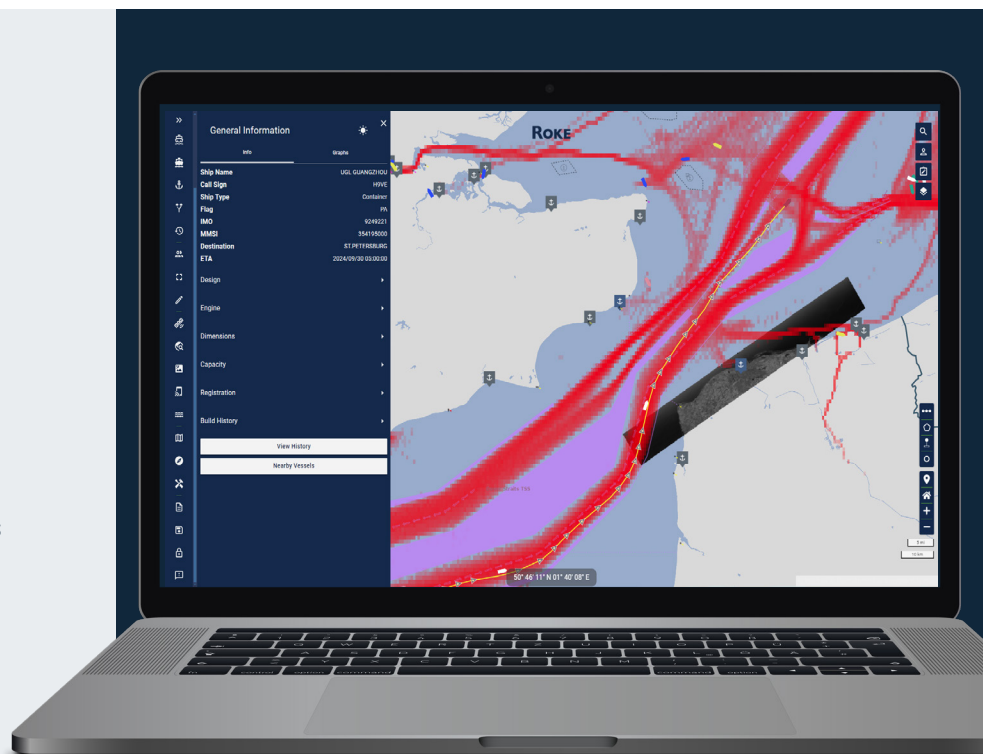
Today's maritime domain is complex, and organisations face a dynamic range of human and environmental threats in ever-changing geopolitical landscapes. This presents a challenge for governments and operators to monitor assets, mitigate risks and remain compliant.

Lead with Intelligence

This challenge is amplified as the tactics used by illicit actors in sanctions evasion, dark shipping and other illegal activities are continually evolving. Access to the latest intelligence and data sources within a single source of truth has never been more important.

Geollect, the Maritime Domain Awareness solution, delivers seamless access to a suite of geospatial intelligence tools, customised datasets, automated alerts and analyst expertise, within an intuitive user interface.

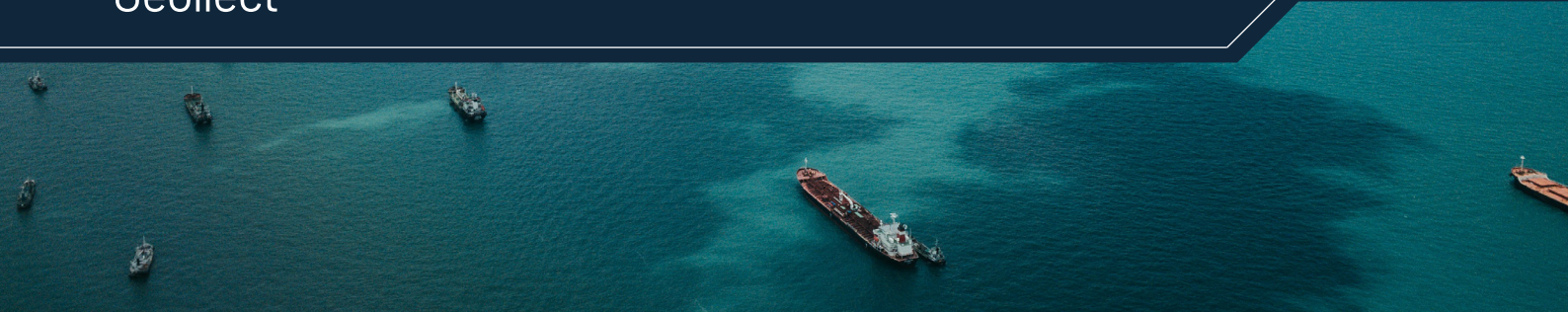
More than just a platform, Geollect enables users to call on our in-house expert analysts, who become an extension of your team, supporting an intelligence-led approach to monitoring and understanding the global maritime domain.



Proven in the field

'The ability to use multiple information sources, in a fused environment, via a tailored user-interface has improved situational awareness for users across the Royal Navy.'





Features & Benefits

- Awareness** Enhanced holistic awareness of the maritime domain enables proactive and informed decisions from actionable insights that deliver a strategic advantage over the competition.
- Intelligence** Call on our in-house experts, who become an extension of your team, supporting an intelligence-led approach to monitoring and understanding the global maritime domain.
- Automation** Monitor dynamic and near real-time assets, such as a fleet of vessels, through automated alerts, reducing the burden on operators.
- Partnerships** Geollect leverages Roke's wide partner network to enable access to best-in-class maritime, earth observation and other contextualising data to provide a complete common operating picture.
- Focused** Geollect is a flexible, modular, request-driven system, built by operators, for operators.
- Tailored** Geollect allows your proprietary data to be ingested and layered to give customised, holistic, enriched analytical insights.
- Multi-Use** Geollect enables Maritime Domain Awareness, due diligence and sanctions compliance, forensic investigations and dark vessel activity awareness alongside fleet monitoring and vessel tracking.
- Complete** Authoritative, open source, commercial, proprietary, and customer datasets provide a holistic, unrivalled operational picture.

Roke are Changing Worlds

Roke is a leading UK innovator in science and engineering. For over 60 years we've been improving the world through innovation, combining the physical and digital. We conceive, design and secure technically advanced data and communication systems for governments and industry.

Our deep knowledge of sensors, communications, cyber and AI means our 600+ engineers are uniquely placed to combine and apply these technologies to solve real world technical challenges and help deliver critical missions for our customers.

As a trusted partner, we welcome any problem, and are confident that our consulting, research, innovation and product development will keep people safe.

For more information on the services discussed in this document you can contact us:

Call: +44 (0)1794 833000 • **Email:** info@roke.co.uk • **Visit:** www.roke.co.uk