

# Crucible

Providing you a single source of the truth

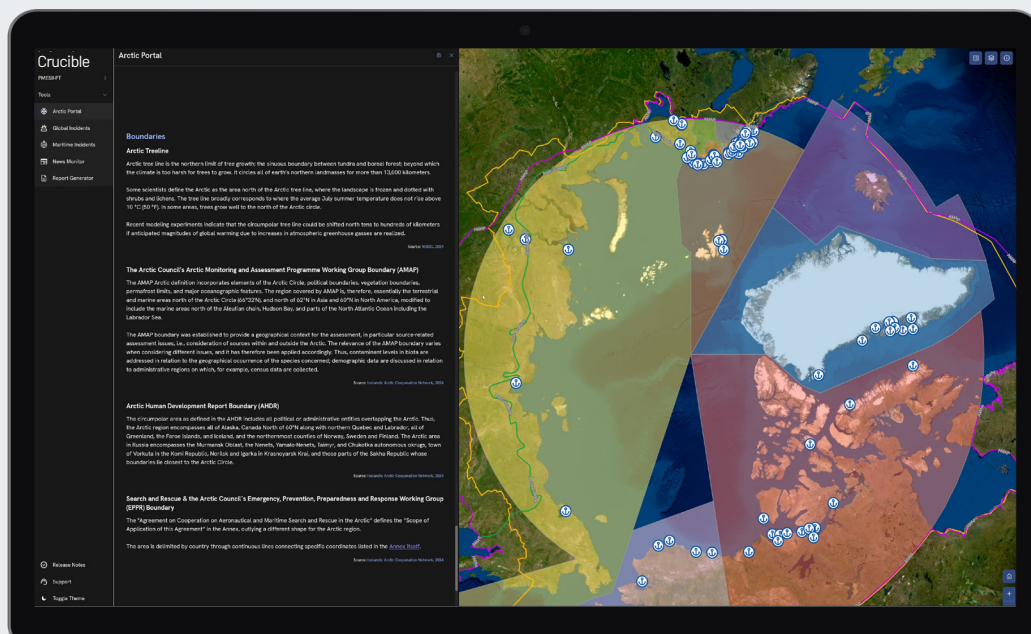
Today's Information Environment (IE) poses new and complex challenges for military operations.

The open-source domain provides a plethora of datasets to support military campaign planning and information operations on a global scale. However, due to the amount of data available, identifying and collating best-in-class data sources to deliver against collection plans presents a challenge.

## Dynamic information operations

Crucible solves this through the automation of data collection, processing and aggregation of curated open-source intelligence (OSINT). Fusing these datasets in a centralised source of truth removes the manual collection of data from the analyst's workflow, thus enabling analysts to focus on the analysis and understanding of the data.

The standardisation of data sources within the platform greatly increases the efficiency, consistency and continuity of assessments, enabling not only a current understanding of the IE but a pattern of life awareness of how trends are developing across the complete PMESII-PT framework.





## Features & Benefits

### Data Collection

Crucible automates the collection of curated static and real time OSINT data feeds to reduce the amount of time and resource required for information operations and campaign planning activities.

### PMESII-PT Framework

Created from a customised intelligence collection plan, Crucible has been streamlined using the familiar PMESII-PT framework, allowing for the efficient location and extraction of pertinent data.

### Automated Reporting

Crucible streamlines the sharing of intelligence by automating the creation of dynamic Information Environment Assessments (IEAs) for distribution internally or to no and low connectivity environments.

### Actionable Insights

Crucible leverages geospatial visualisation techniques to conceptualise and contextualise data, enabling analysts to understand and deliver timely insights to operators in unique environments against their specific intelligence requirements.

### Data Experts

The volume, variety, velocity, and veracity of publicly available information makes the IE a big data challenge. Crucible collects, processes and augments over 150 data sources into a single source of truth, highlighting critical insights amongst the noise.

### Global Awareness

Crucible delivers the capability to efficiently monitor, analyse, characterise, assess, and visualise data to enable enriched global awareness of the IE.

## Roke are Changing Worlds

Roke is a leading UK innovator in science and engineering. For over 60 years we've been improving the world through innovation, combining the physical and digital. We conceive, design and secure technically advanced data and communication systems for governments and industry.

Our deep knowledge of sensors, communications, cyber and AI means our 600+ engineers are uniquely placed to combine and apply these technologies to solve real world technical challenges and help deliver critical missions for our customers.

As a trusted partner, we welcome any problem, and are confident that our consulting, research, innovation and product development will keep people safe.

**For more information on the services discussed in this document you can contact us:**

**Call:** +44 (0)1794 833000 • **Email:** info@roke.co.uk • **Visit:** www.roke.co.uk